



CHEVAL
RESIDENCES
DUBAI ISLANDS

THE LOOKBOOK

AVENEW
DEVELOPMENT

x

WADEEN
DEVELOPERS

A PROMISE, SHAPED THROUGH DESIGN.



Like a precious object forged by a master artisan,
an idea takes form with craft and purpose.
Past and future converge in material, geometry
and essence.

**MORE THAN AN OBJECT, IT BECOMES A METAPHOR OF
IDENTITY AND OF SOMETHING NEW TAKING SHAPE.**

CHEVAL RESIDENCES DUBAI ISLANDS

Elevated Island Living

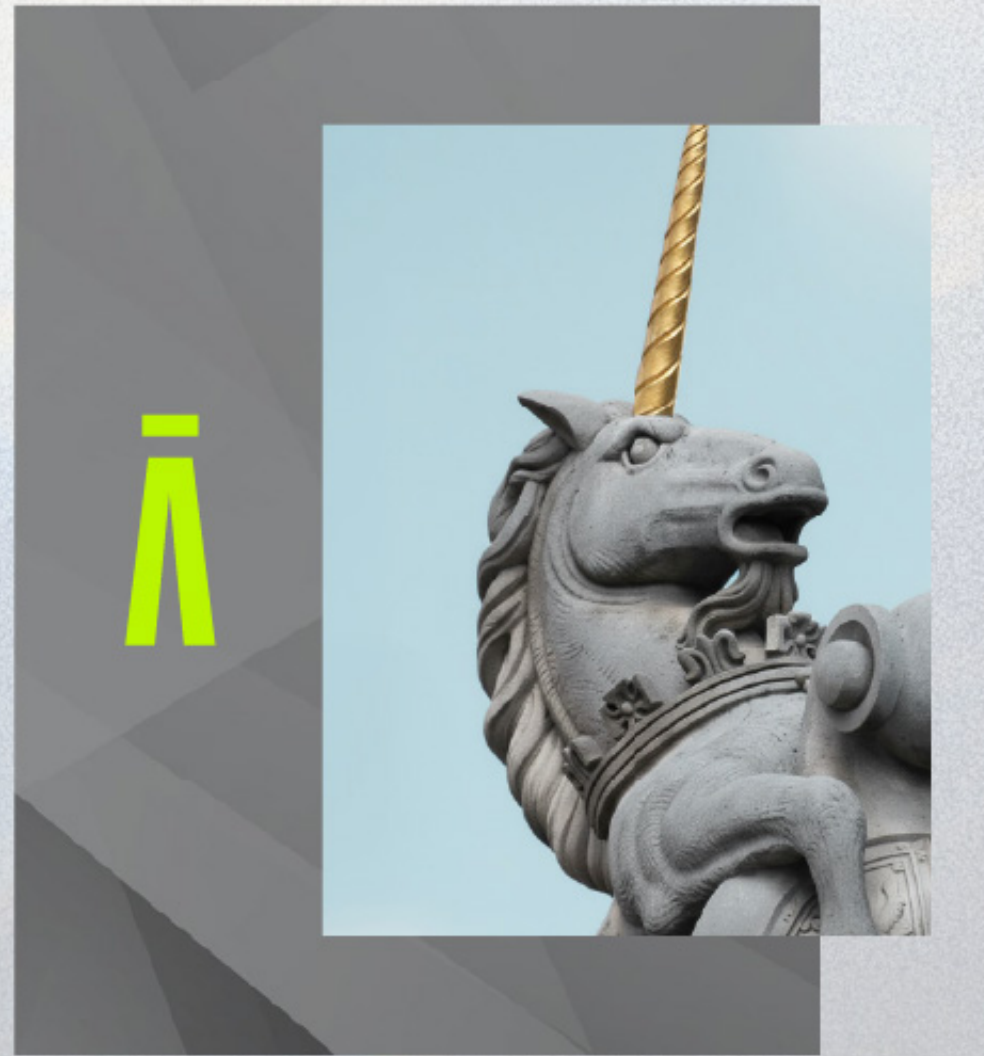
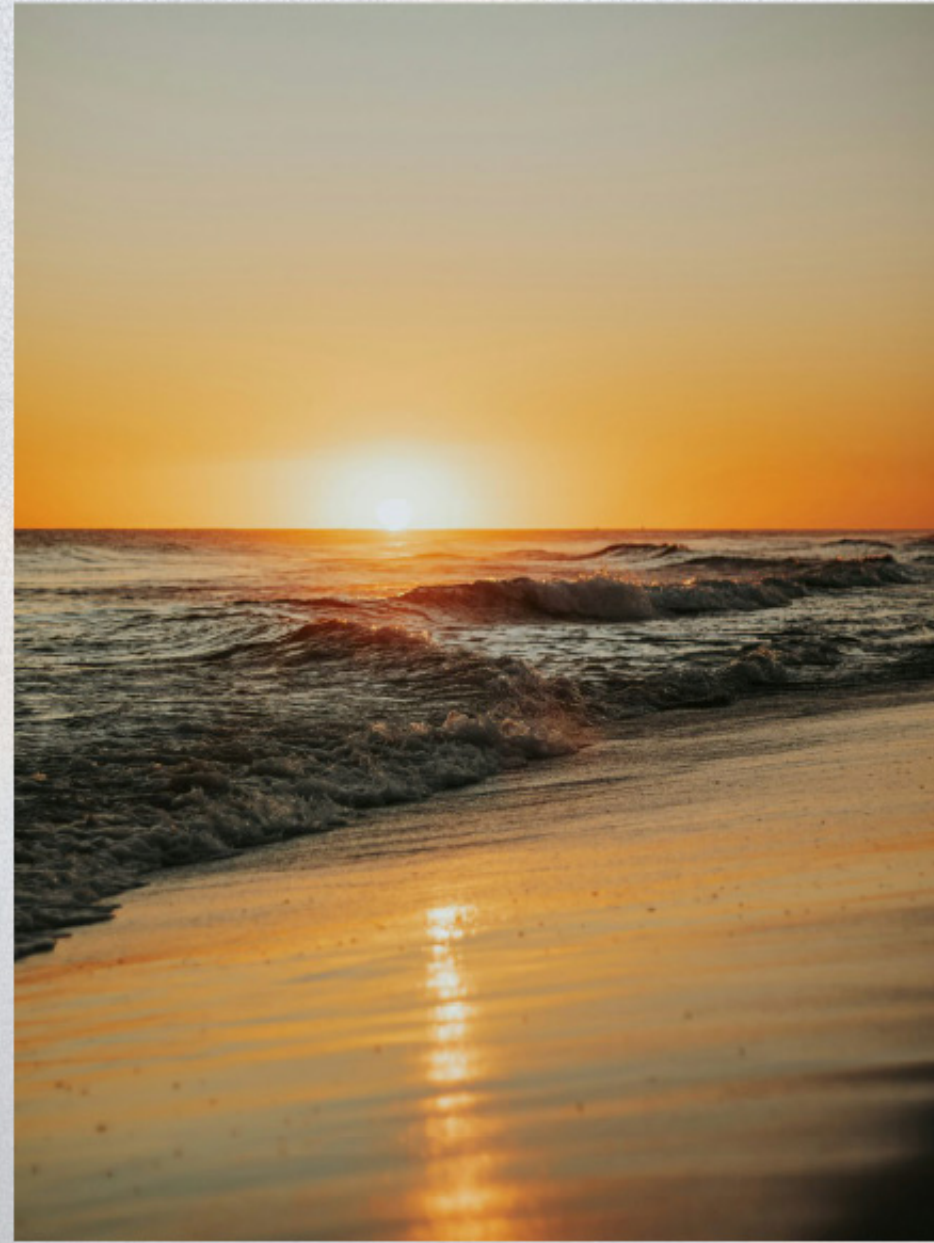
At Cheval Residences, in the heart of Dubai Islands, a collection of refined serviced hotel residences welcomes you from the very first moment.

A Legacy of Hospitality

More than a residence, Cheval offers a lifestyle shaped by hospitality. Residents experience the privacy of home alongside the convenience of fully serviced living, within serviced hotel residences designed to five-star standards, ensuring every moment is effortless and personalised



TABLE OF CONTENTS



Chapter 1
LOCATION

Chapter 2
PROJECT

Chapter 3
AMENITIES & SERVICES

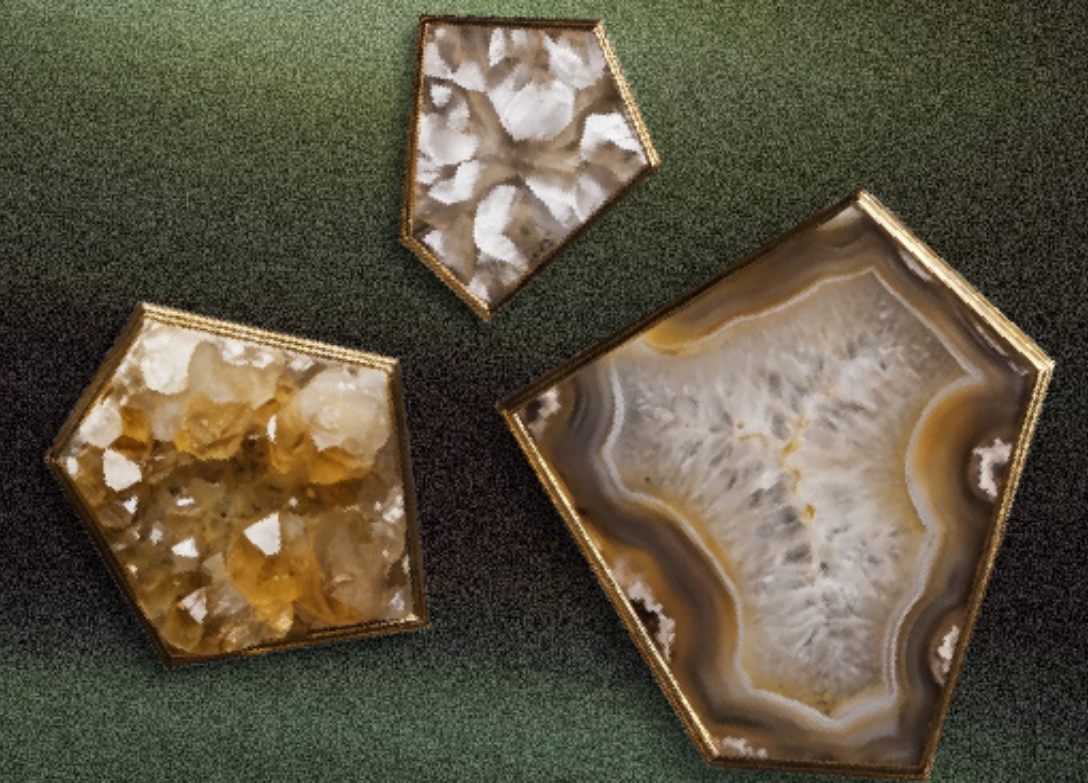
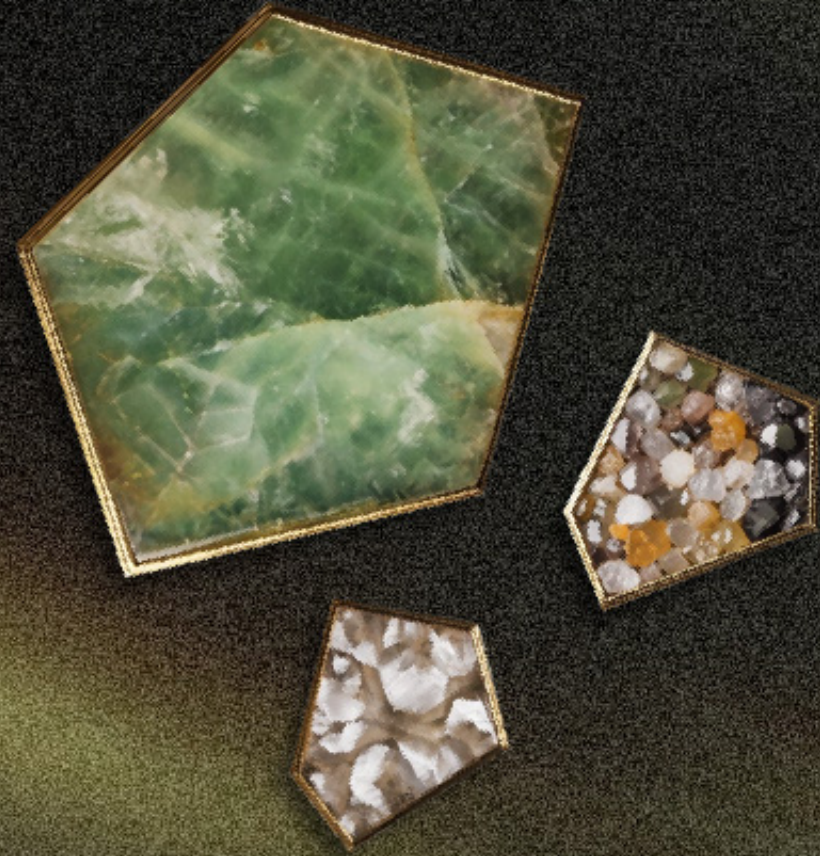
Chapter 4
PROPERTY

Chapter 5
DEVELOPER

CHEVAL
RESIDENCES
DUBAI ISLANDS

Chapter 1

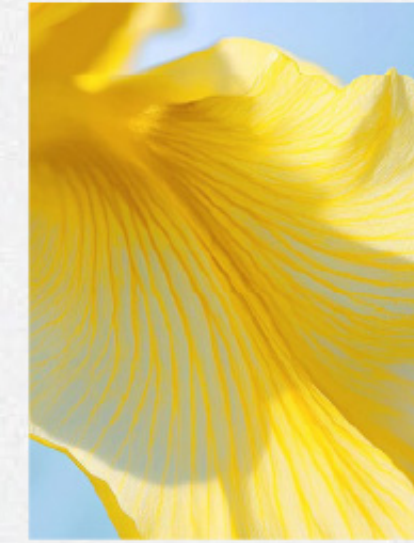
LOCATION





GENTLE ESCAPE

A WORLD APART,
YET PERFECTLY IN REACH



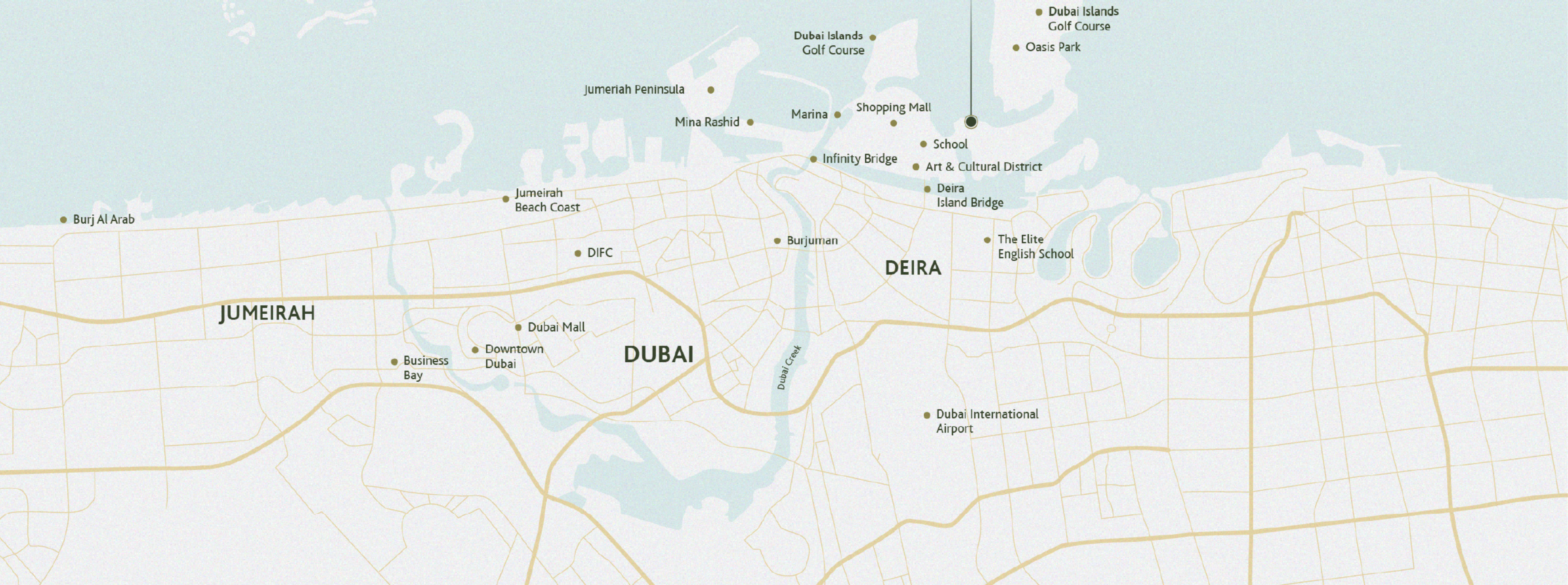
Dubai Islands is an emerging waterfront destination where the rhythm of the city gives way to a more relaxed pace of life.

Pristine beaches, vibrant promenades and seamless connectivity to key districts create a setting that is both tranquil and well connected.





**CHEVAL
RESIDENCES**
DUBAI ISLANDS





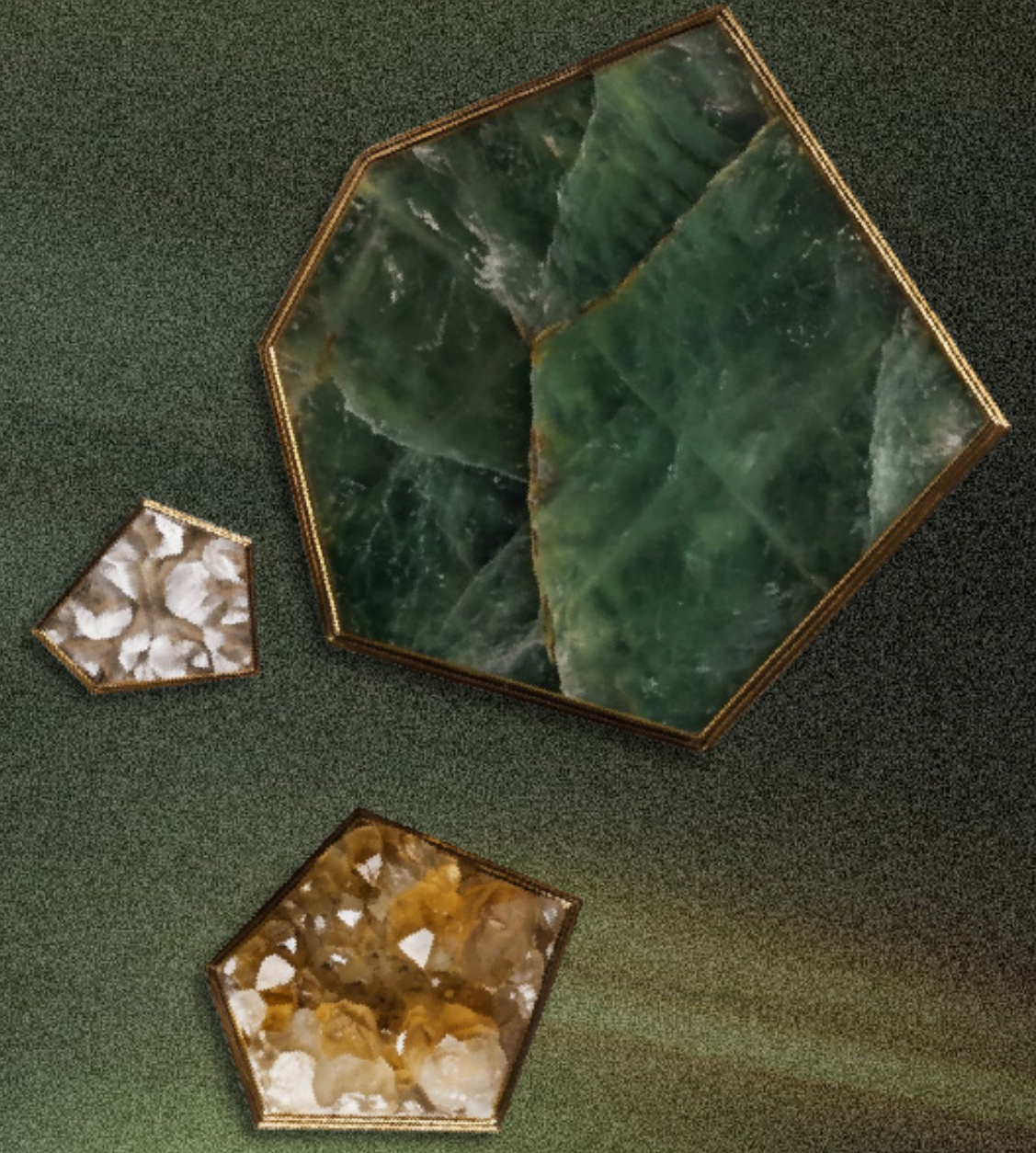
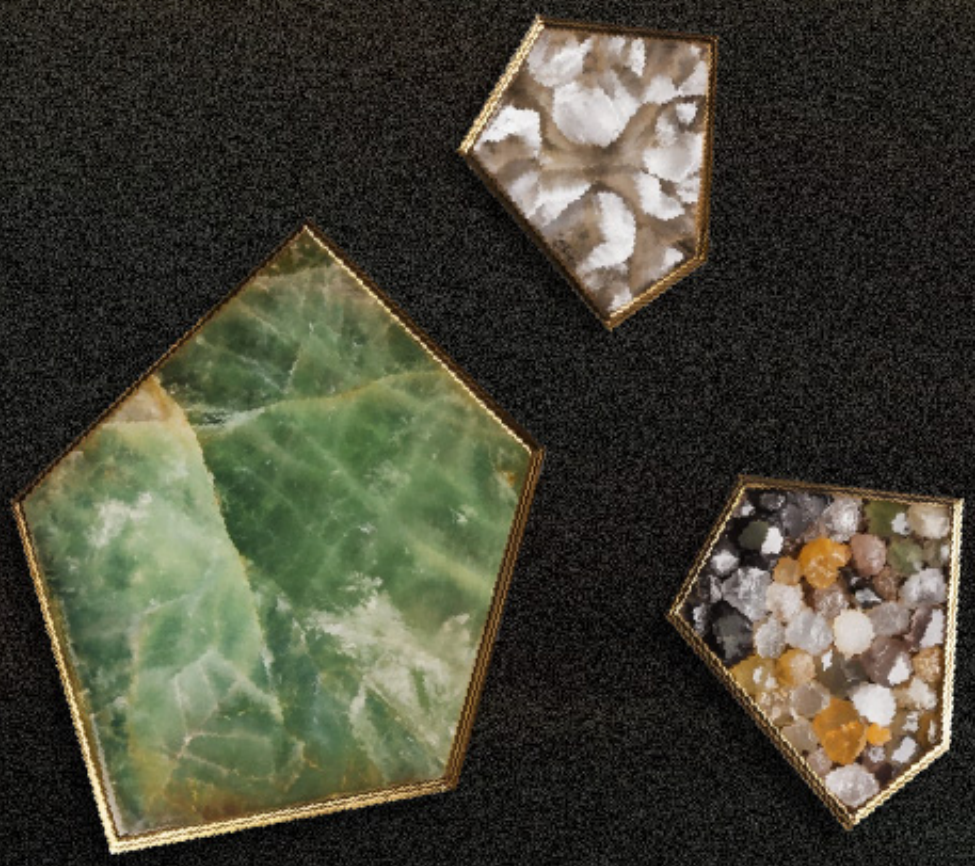
CHEVAL
RESIDENCES
DUBAI ISLANDS



CHEVAL
RESIDENCES
DUBAI ISLANDS

Chapter 2

PROJECT



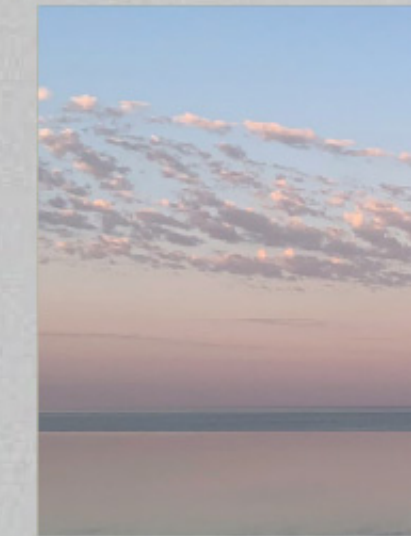
CHEVAL
RESIDENCES
DUBAI ISLANDS





LINEAR GEOMETRY

LIVING, EXTENDED TO THE HORIZON



A thoughtfully designed collection of serviced hotel residences shaped by clean lines and balanced proportions.

Across eight floors, one-, two-, and three-bedroom homes are carefully planned, each offering its own sense of space and character through layouts that feel both personal and practical, designed to five-star standards.



CHEVAL RESIDENCES

DUBAI ISLANDS



Warm materials, natural wood, champagne toned metal, dark finishes and glass, are composed into a refined palette that gives depth and character to the building.

CRAFTED FOR A LIFE OF BALANCE

Greenery is integrated into the architecture, extending across terraces and pathways, softening the structure and bringing a natural presence into everyday living.

The result is an environment that feels complete, where every element contributes to a cohesive whole.

From the ground level to the rooftop, curated amenities support a lifestyle centred on ease and wellbeing.



CHEVAL
RESIDENCES
DUBAI ISLANDS





OPEN AIR

WHERE IMAGINATION LIVES

Outdoor spaces continue the language of the interiors, unfolding into generous terraces and open areas designed to enhance everyday living and offer moments of effortless pleasure.





DAILY RITUALS

At Cheval Residences, every element is designed to create balance, with the presence of water becoming central to the experience.

The pool is conceived not only as a place, but as a state of mind, where the body unwinds, the rhythm softens, and the senses are gently restored.

CHEVAL RESIDENCES

DUBAI ISLANDS



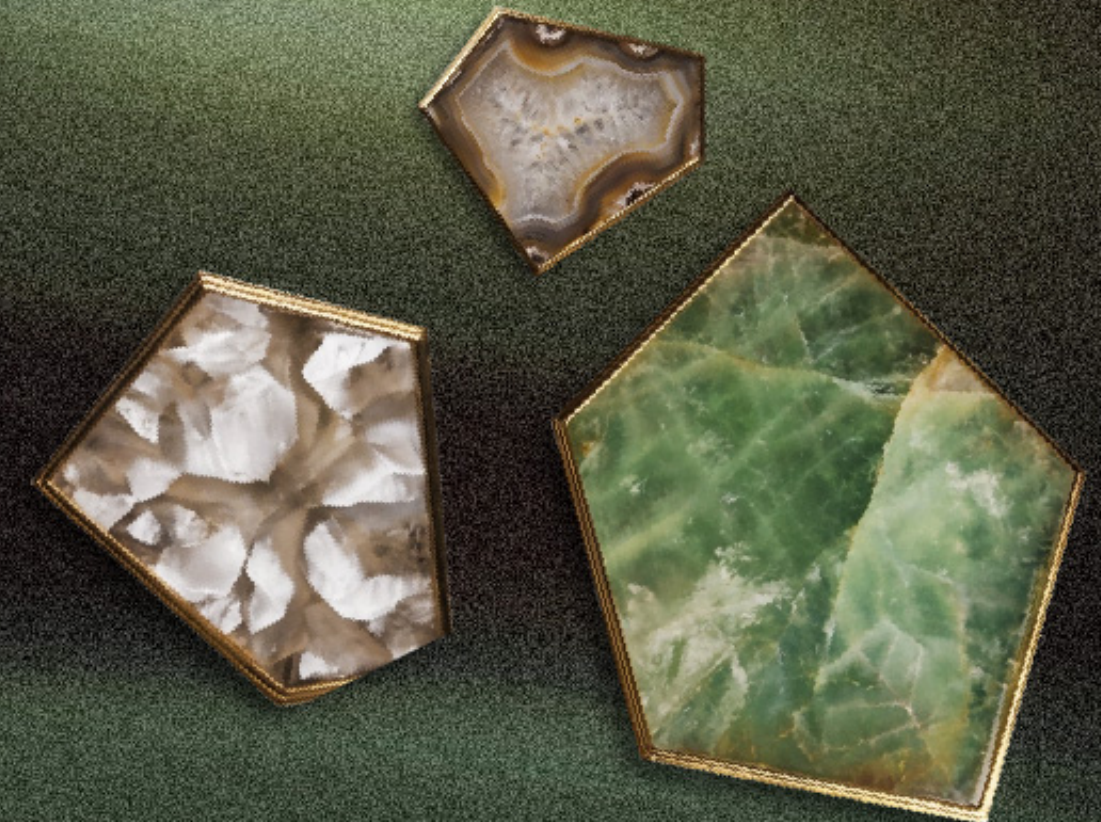
TRUE LIVING

Here, immersed in light and stillness, thoughts begin to dissolve, leaving space for a more fluid, effortless way of being.

CHEVAL
RESIDENCES
DUBAI ISLANDS

Chapter 3

AMENITIES & SERVICES

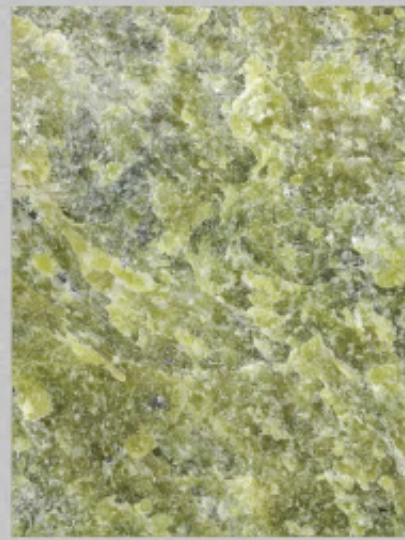


CHEVAL
RESIDENCES
DUBAI ISLANDS



GRAND LOBBY

A FIRST IMPRESSION,
DEFINED WITH DEPTH



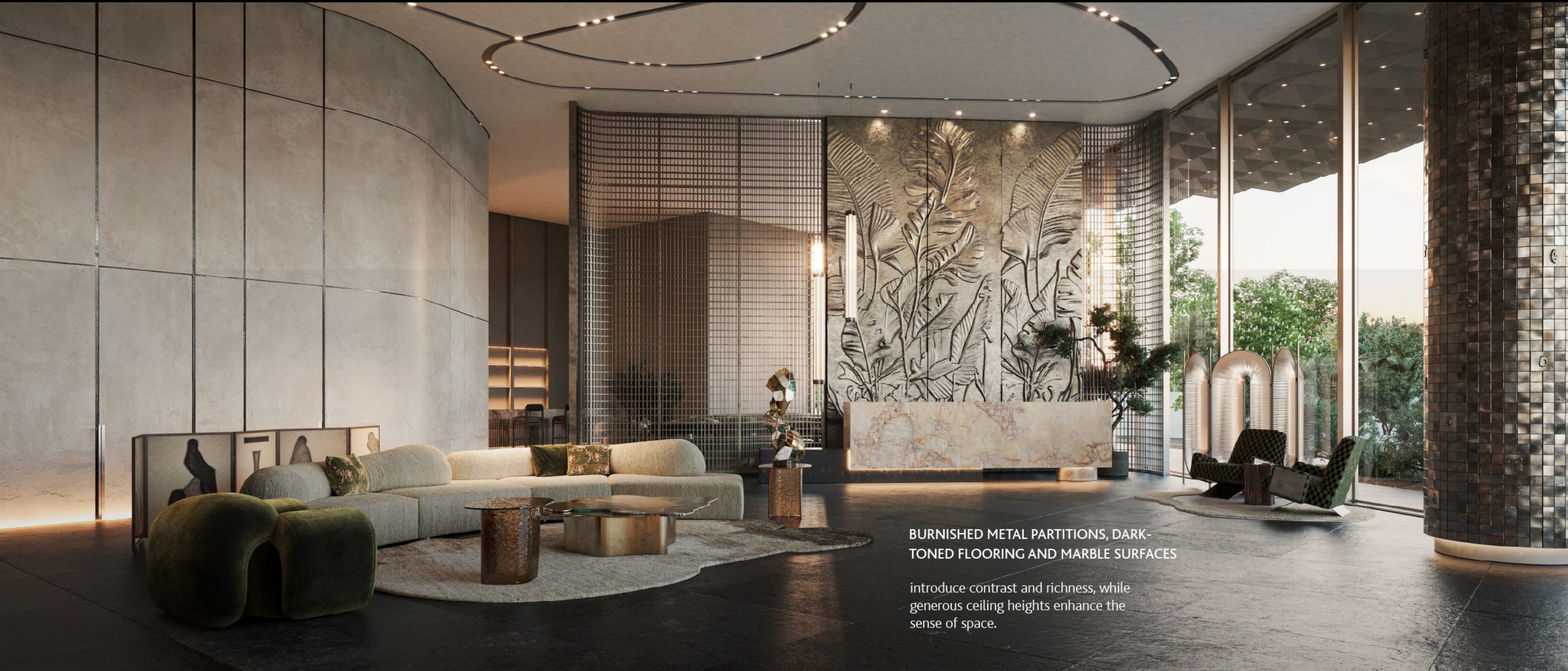
The arrival experience is shaped by balanced design and carefully selected materials, creating an immediate sense of ease.

Layered textures and soft finishes add warmth, resulting in an environment that feels inviting and well considered.

**CHEVAL
RESIDENCES**
DUBAI ISLANDS



CHEVAL RESIDENCES DUBAI ISLANDS



BURNISHED METAL PARTITIONS, DARK-TONED FLOORING AND MARBLE SURFACES

introduce contrast and richness, while generous ceiling heights enhance the sense of space.





INFINITY POOL

A SENSORY ENCOUNTER
WITH BLUE



Set against the backdrop of the private beach, the infinity pool extends the line between water and sky.

CHEVAL
RESIDENCES
DUBAI ISLANDS



CHEVAL
RESIDENCES
DUBAI ISLANDS



CHEVAL RESIDENCES DUBAI ISLANDS



PANORAMIC ROOFTOP

FRAMED BY BEAUTY



At the top of the building, the terrace opens to uninterrupted views of the sea.

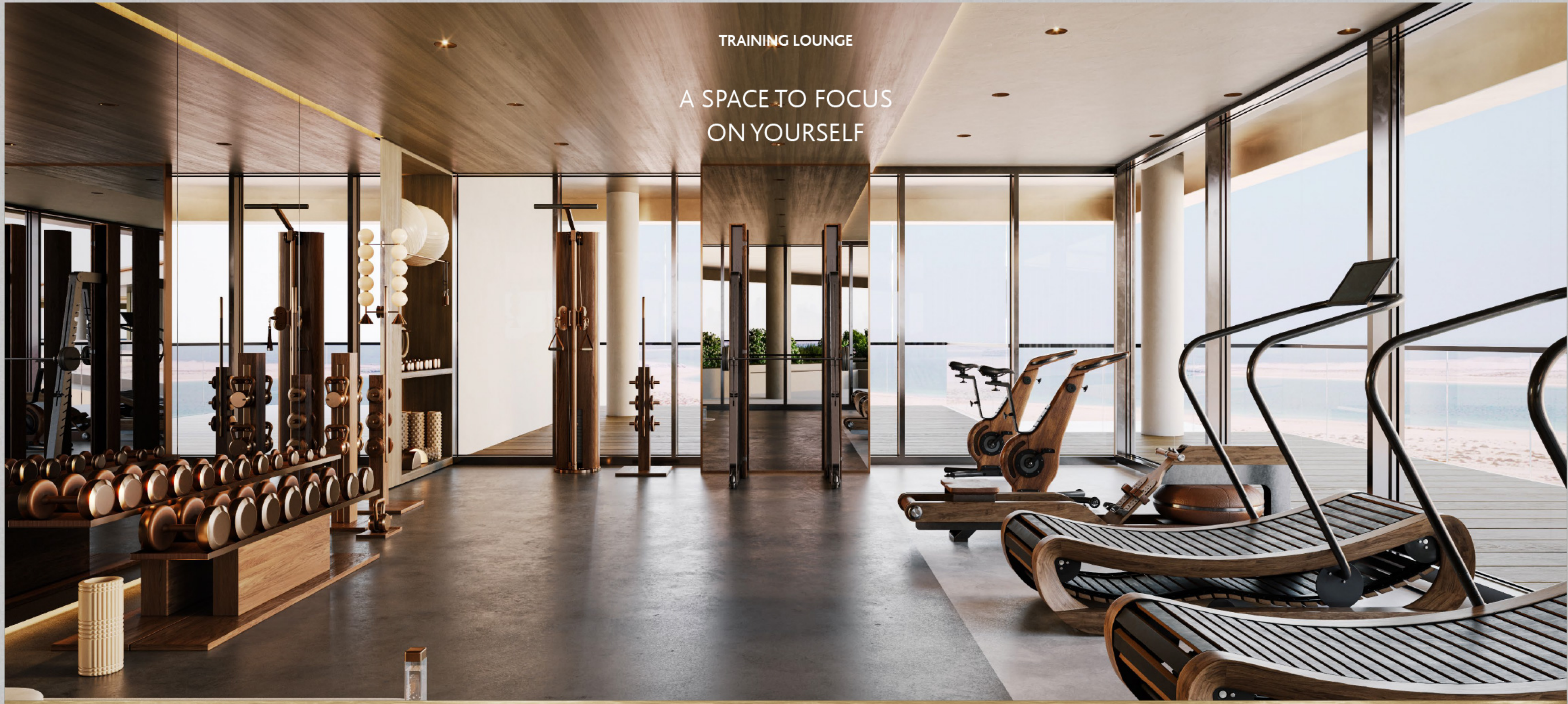
A place shaped by perspective, designed for special occasions where the day gently transitions into evening, and the setting sun becomes a canvas to admire and a gentle breeze carries a sense of calm through the air.

**CHEVAL
RESIDENCES**
DUBAI ISLANDS



CHEVAL
RESIDENCES
DUBAI ISLANDS

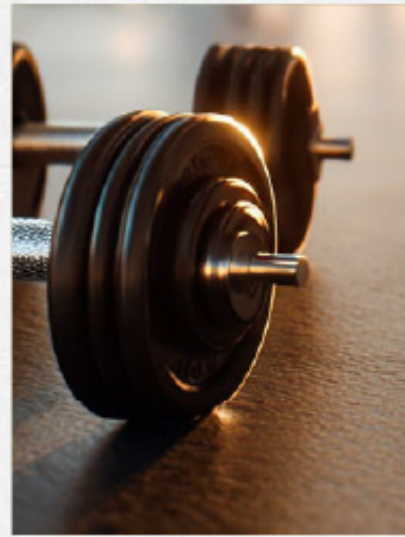




TRAINING LOUNGE

A SPACE TO FOCUS
ON YOURSELF

A private gym designed as a place to reconnect,
where time becomes your own, and attention
returns to body and mind.



An environment grounded in balance and quiet concentration, where high-quality equipment supports your daily routine enriched by the privilege of open, far-reaching views.



SPA & WELLNESS

A SPACE TO UNWIND AND RECHARGE



The spa and sauna offer a peaceful retreat from the rhythm of everyday life, where warmth and calm come together to restore both body and mind.

Thoughtfully designed with comfort in mind, these spaces invite residents to slow down, relax, and reconnect whether it's a quiet sauna session or a restorative treatment.



CHEVAL
RESIDENCES
DUBAI ISLANDS



Services

THE ART OF EFFORTLESS LIVING

At Cheval Residences Dubai Islands, living extends beyond the walls of your home. Inspired by a legacy of hospitality, a comprehensive range of services ensures that every aspect of daily life is seamlessly managed.

Included Services

Concierge & 24-hour security
Public area housekeeping
Comprehensive building management & maintenance
Valet

A La Carte Services

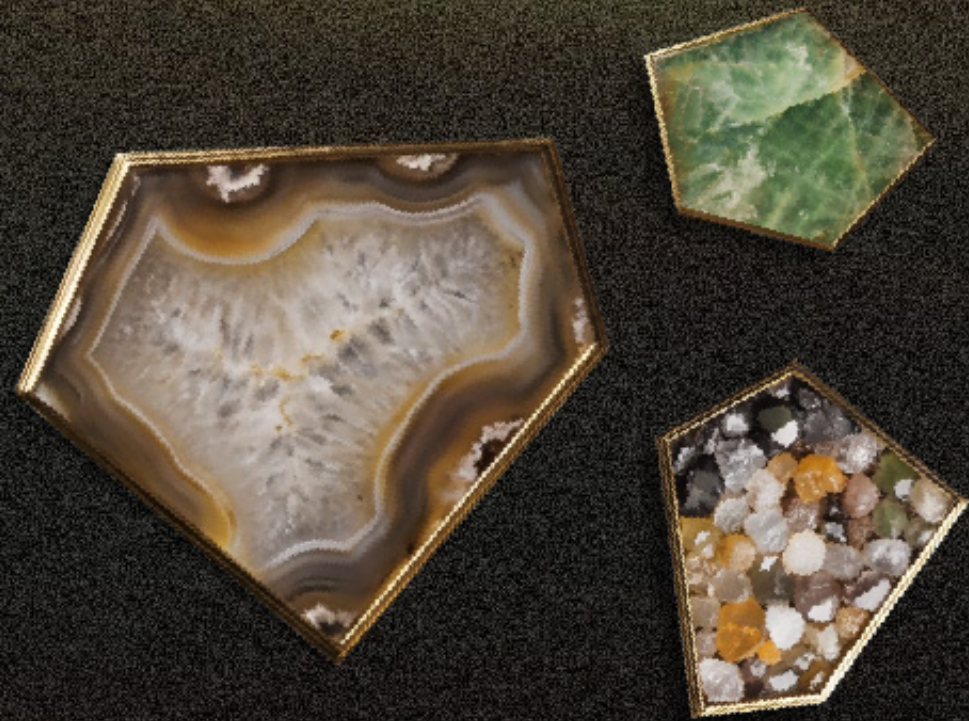
Bespoke housekeeping
Professional travel & transport arrangements
Curated culinary & event services
In-residence wellness & personal care
Technical & executive support



CHEVAL
RESIDENCES
DUBAI ISLANDS

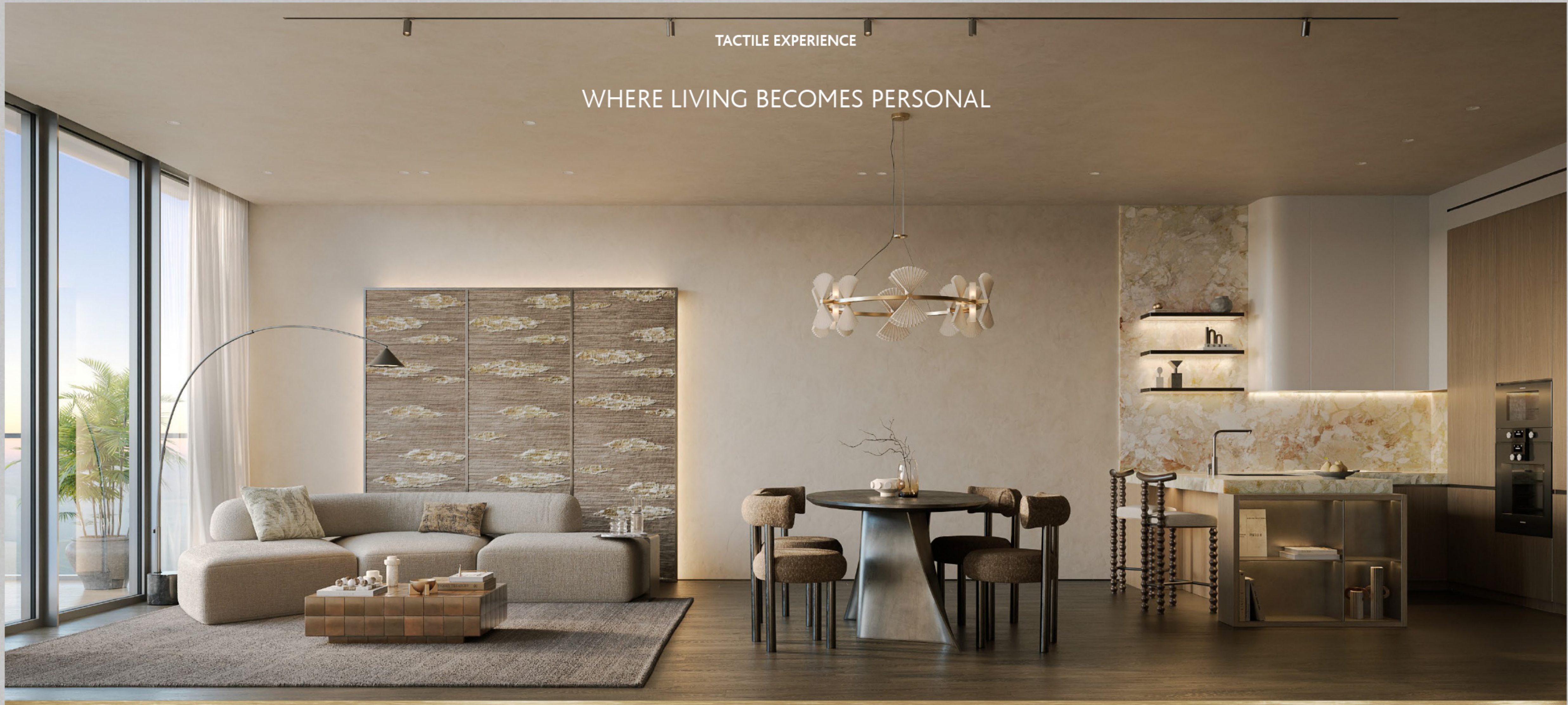
Chapter 4

PROPERTY



TACTILE EXPERIENCE

WHERE LIVING BECOMES PERSONAL



Textures add depth and warmth shaping interiors that feel balanced, intimate and inviting.

ONE-BEDROOM RESIDENCE

A SPACE
MEANT TO BE FELT



The living area is conceived as a place of comfort and quiet presence.

Soft textiles envelop the seating, inviting you to slow down and settle in.

Dark wood flooring anchors the space, giving it continuity, while ceramic accents introduce contrast, bringing together a feeling of ease.







MOMENTS TO SHARE

The kitchen continues naturally from the living space, maintaining a soft and continuous transition.

Lighter tones define the environment, where Ceppo di Sicilia marble surfaces emerge as a distinctive element. A composition that feels both functional and quietly expressive.



CHEVAL
RESIDENCES
DUBAI ISLANDS





A SENSE OF REST

The sleeping area is designed as a retreat within the home.

A soft headboard defines the space, inviting comfort and stillness.

Behind it, a textured wall adds presence, shaping an atmosphere that feels calm, intimate and composed.



TWO-BEDROOM RESIDENCE

**A REFINED BALANCE BETWEEN OPENNESS
AND INTIMACY**



Interiors open into generous, well-proportioned spaces,
where wide openings draw in light and views,
maintaining a seamless connection to the outdoors.







STYLE RESIDES IN HARMONY

Each space is orchestrated through proportion and rhythm, offering an environment that remains expansive and well-resolved.

Custom-designed elements, including integrated shelving, reinforce a cohesive language, extending seamlessly into the bedroom and bathroom.



CHEVAL
RESIDENCES
DUBAI ISLANDS







THREE-BEDROOM RESIDENCE

A BROADER DIMENSION OF HOME



Generous interiors are framed by terraces that wrap around the residence, opening it to the sea and surrounding views.

FLUID BOUNDARIES

Spaces expand outward, allowing each room to connect with the surrounding landscape, where the exterior becomes an integral part of everyday living.



CHEVAL
RESIDENCES
DUBAI ISLANDS

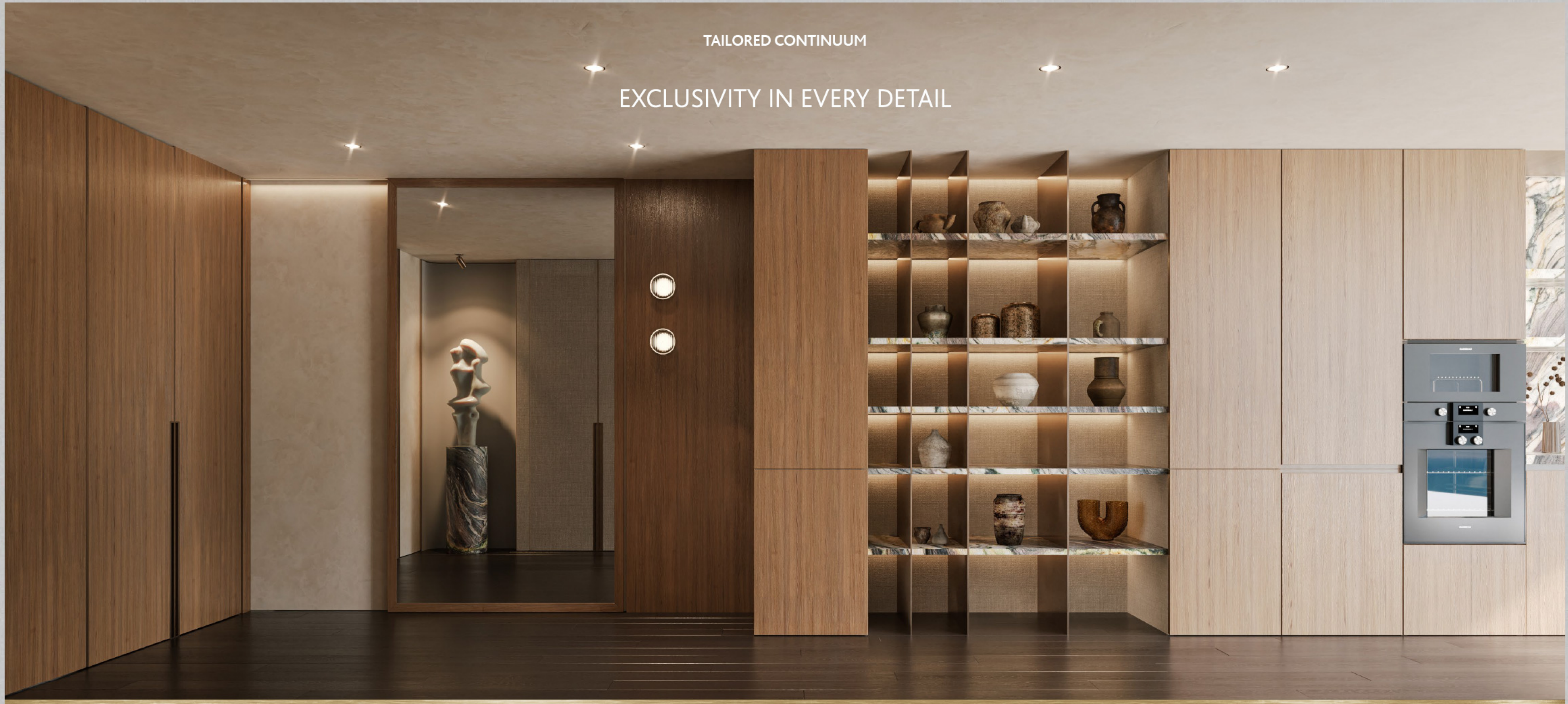


CHEVAL
RESIDENCES
DUBAI ISLANDS



TAILORED CONTINUUM

EXCLUSIVITY IN EVERY DETAIL





PAUSE. RESET. RENEW.

A PLAY OF PERSPECTIVES



The bedroom is conceived as a more intimate dimension, where materials and tones are composed with precision and restraint.

Wallpaper introduces a dynamic interplay of tones, set against the presence of dark wood finishes that define the space, accompanied by the sound of the sea.



CHEVAL
RESIDENCES
DUBAI ISLANDS





CHEVAL
RESIDENCES
DUBAI ISLANDS



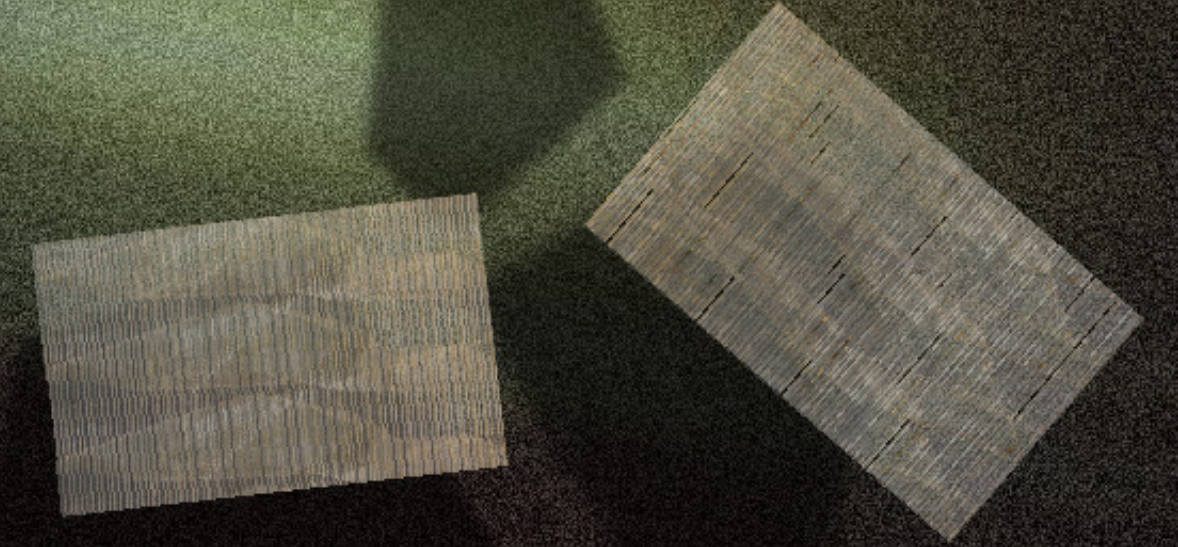
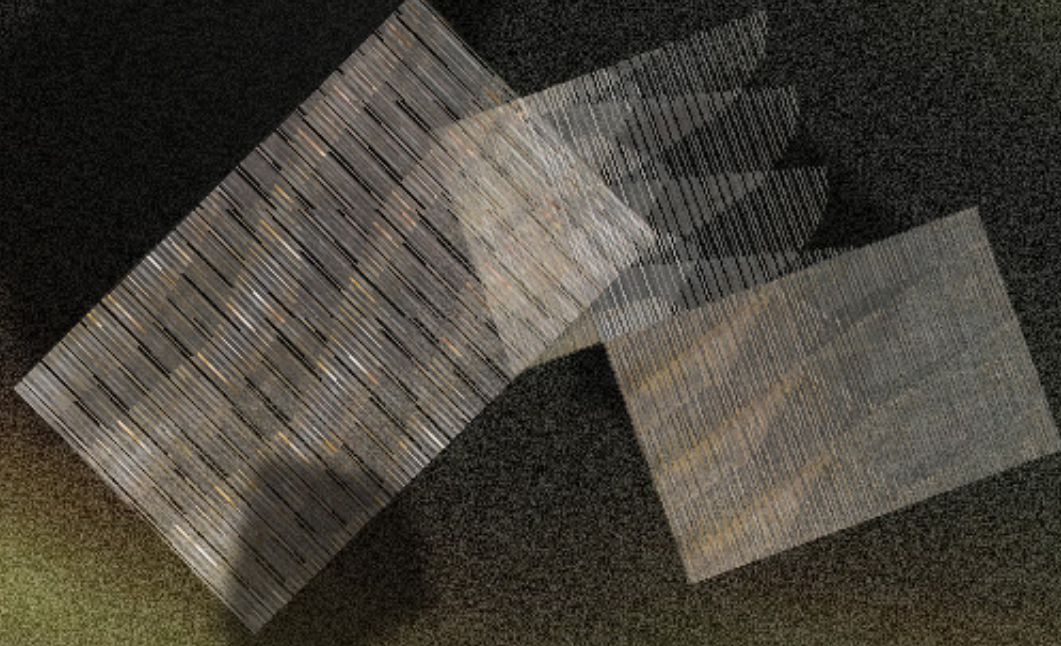
CHEVAL
RESIDENCES
DUBAI ISLANDS



CHEVAL
RESIDENCES
DUBAI ISLANDS

Chapter 5

DEVELOPER



AVENEW DEVELOPMENT

A NEW STANDARD FOR INSPIRED LIVING

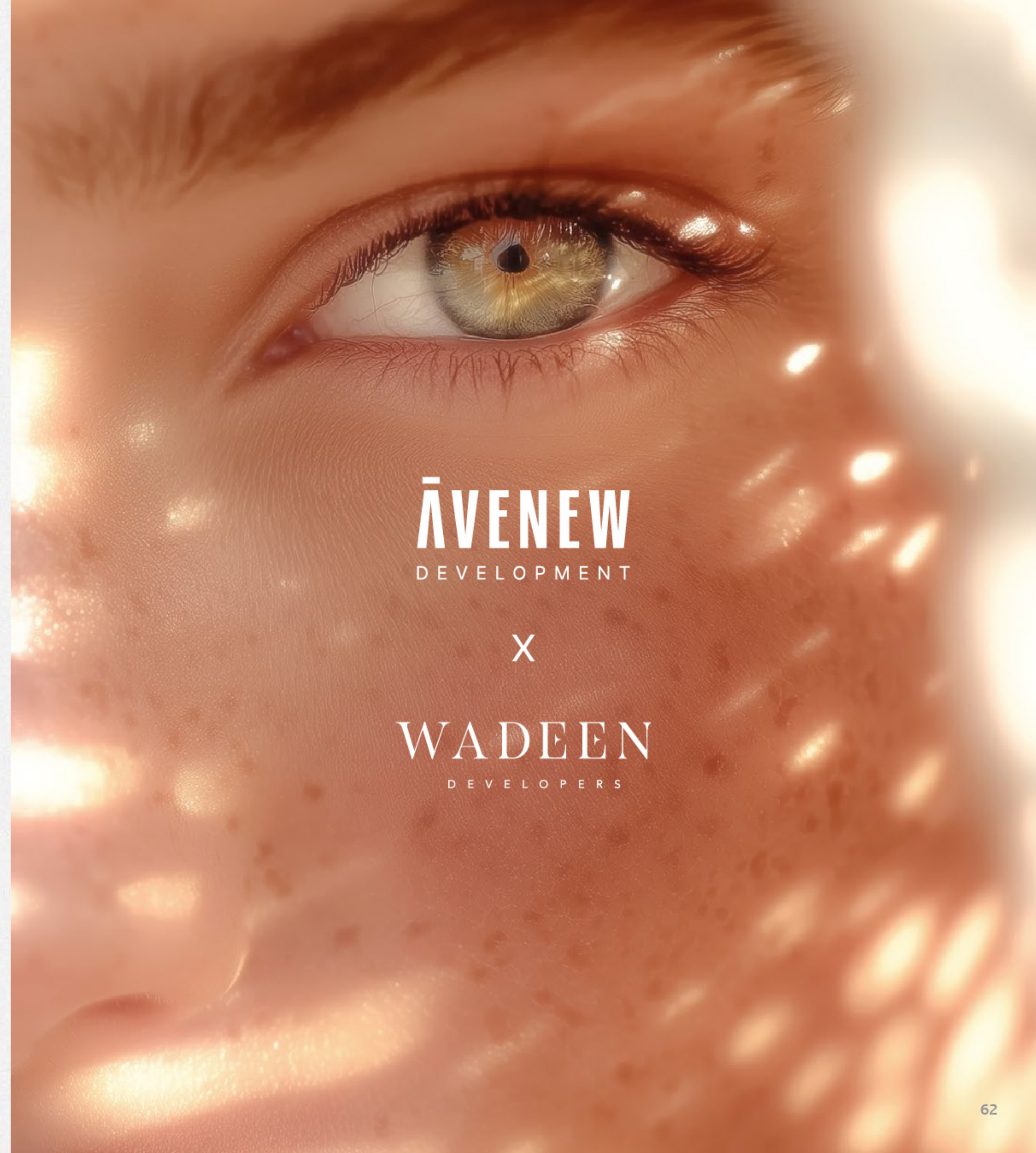
Founded and born in Dubai in 2024 with a vision to craft homes that elevate everyday living. At AVENEW Development, we believe a home is more than just a space, it's where life's finest moments unfold.

That's why we design with intention, creating refined, high-end communities where every detail enhances the way people live, connect and unwind. Our developments are a seamless blend of sophistication and warmth, ensuring that every home isn't just lived in, it's cherished. With a deep commitment to redefining modern comfort, AVENEW Development is setting new standards for inspired living in Dubai one exceptional home at a time.

WADEEN DEVELOPERS

WHERE VISION TAKES FORM

Wadeen Developers is a premier real estate developer with a strong presence in Qatar and a growing footprint in Dubai. The company specializes in bespoke residential and commercial projects that combine innovative design, sustainability, and modern living. With a diverse portfolio of luxury residences and mixed-use developments, Wadeen is committed to delivering high quality projects that elevate lifestyles and foster vibrant communities

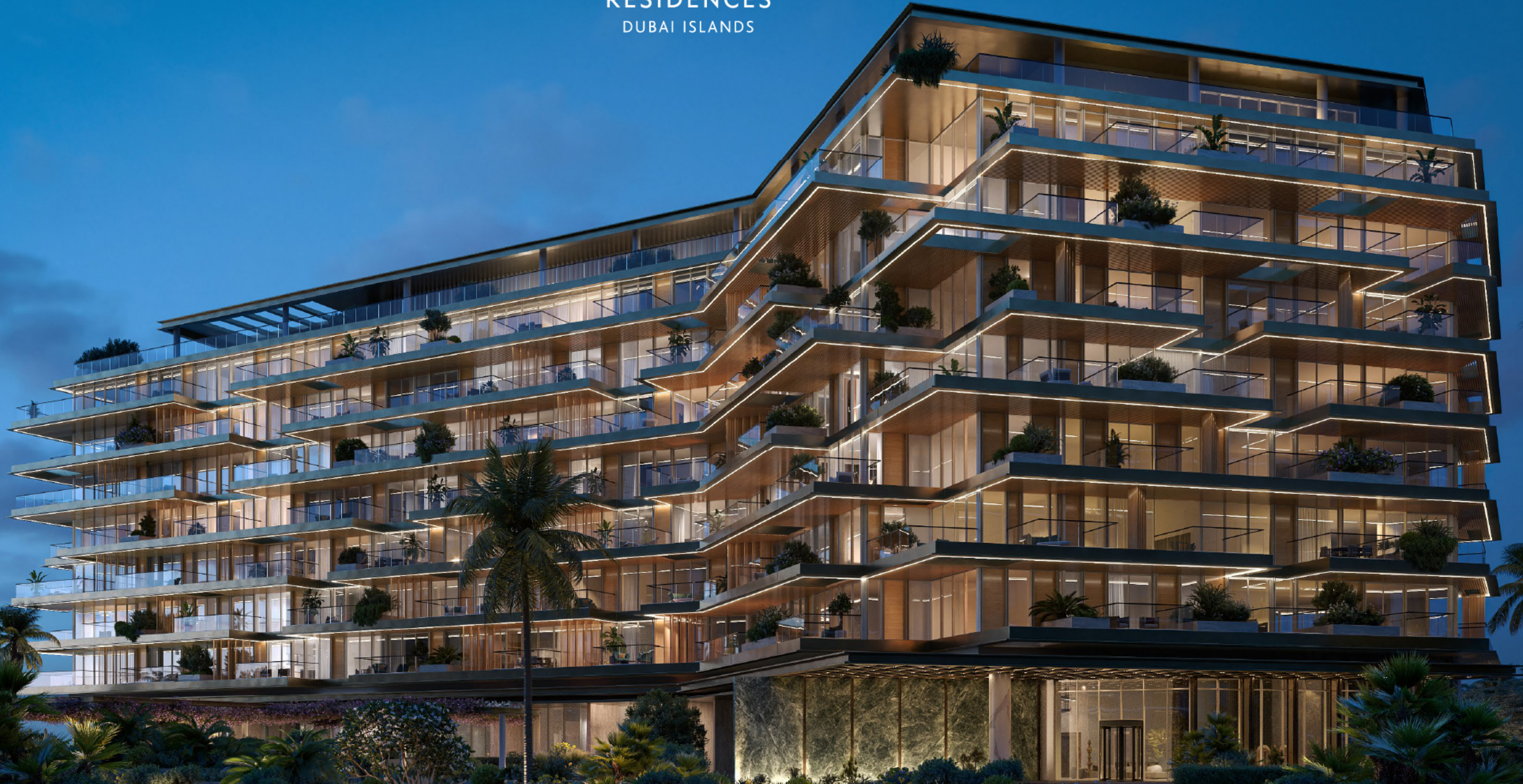


AVENEW
DEVELOPMENT

X

WADEEN
DEVELOPERS

CHEVAL
RESIDENCES
DUBAI ISLANDS





CHEVAL
RESIDENCES
DUBAI ISLANDS

AVENEW
DEVELOPMENT

x

WADEEN
DEVELOPERS

800AVENEW

CHEVALRESIDENCESDUBAIISLANDS.AE

This publication is for illustrative purposes only. Some images are computer-generated (photorealistic renderings) based on the building's architecture, communal spaces, private areas, and interiors. These visuals are intended to present proposed development plans and potential design variations. All furniture and artwork shown are for marketing purposes only. The content, including descriptions and images, is subject to change and holds no contractual value. The investment company retains all rights to the information, and unauthorized reproduction of any part of this document is prohibited.